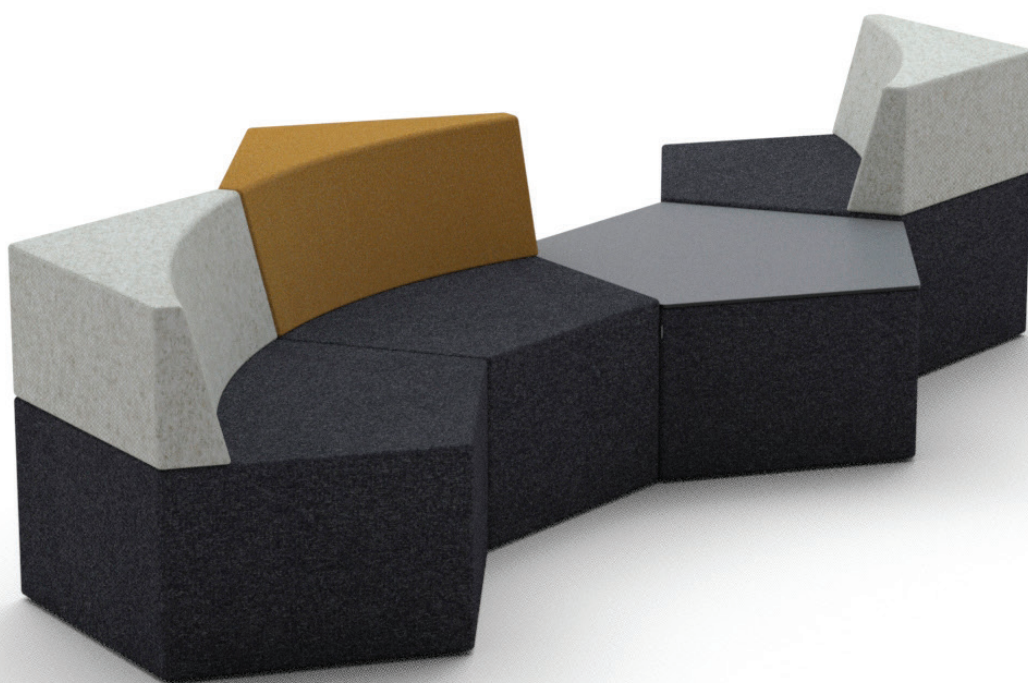


Manhattan Penta

Multifunctional pentagonal seating system



This product has been created for:

- › Public, corporate, educational and hospitality environments
- › Teamwork islands
- › Dividing space into different zones
- › Informal meetings


SOFTREND
THE SOFA



Design:
Morten Nikolajsen

The Manhattan Penta multifunctional pentagonal seating system can be arranged in endless inspiring combinations, each one slightly different from another. It fits perfectly in both playful, flowing rooms and spaces that call for a touch of whimsy and softness. Manhattan Penta is customisable for all public spaces from schools and waiting areas to cosy offices.

The designer's guiding principle is to "make long-lasting products and leave the world in better shape than the how we found it" – an important thought to further develop on your own or together with your team or community.



Product information

Frame

Solid wood and plywood

Upholstery

Seats and backrest have durable and fireproof HR foam

Legs

Adjustable legs with plastic covers; metal socket option

Modularity

Modules can be connected together



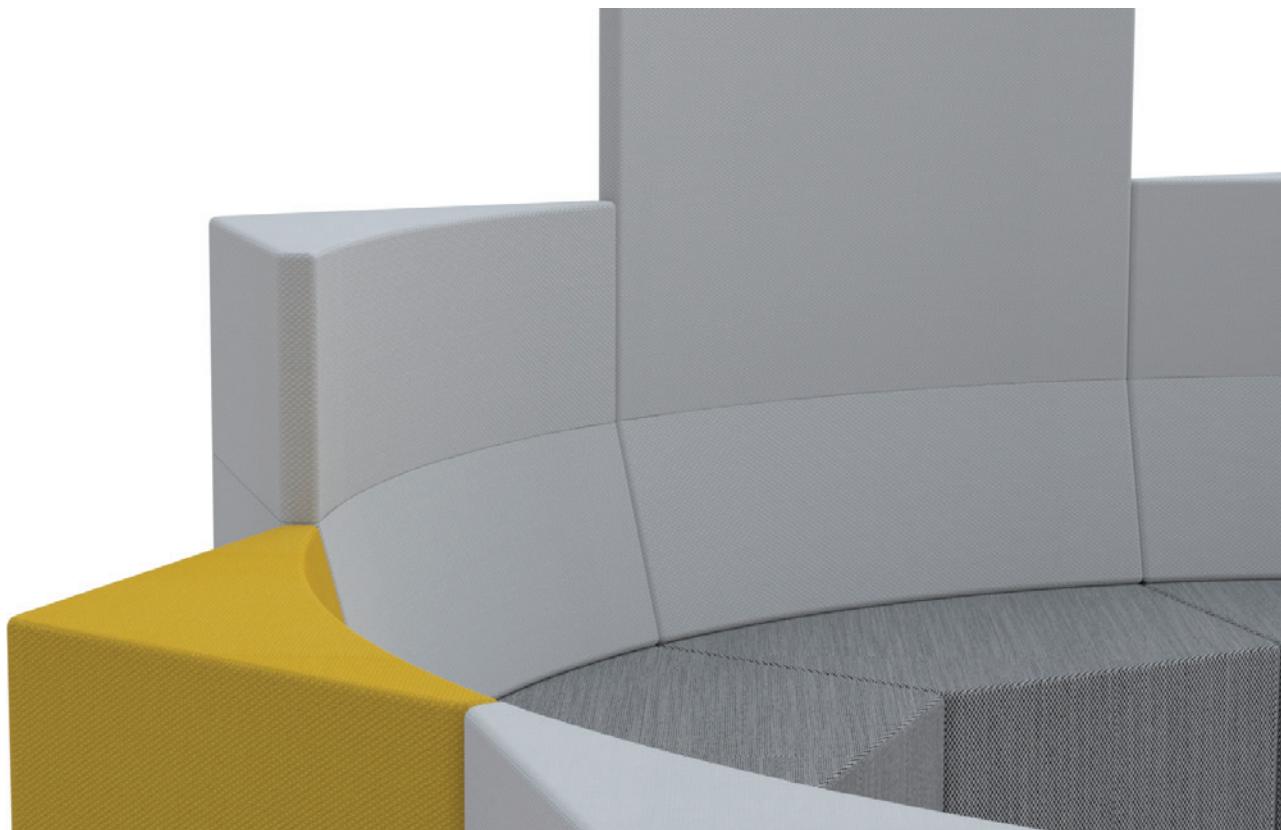
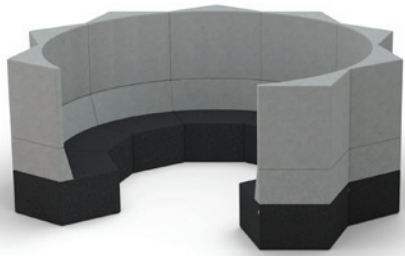
Plug-in option

Additional Information

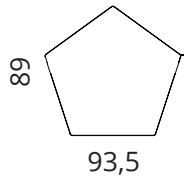
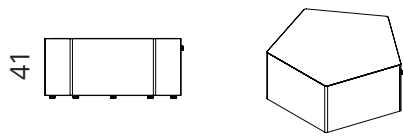
The cover fabric is not removable; wide range of cover materials, including flame-retardant textiles

Tabletop

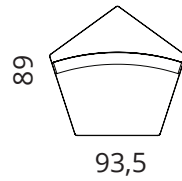
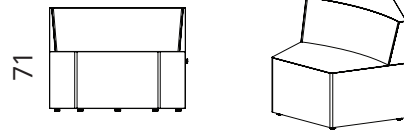
Matte, fingerprint-resistant, high-pressure laminate Formica Infiniti™; colour options: black, white



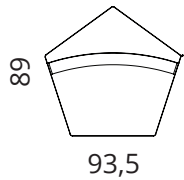
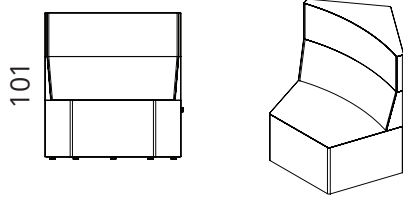
Dimensions



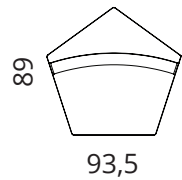
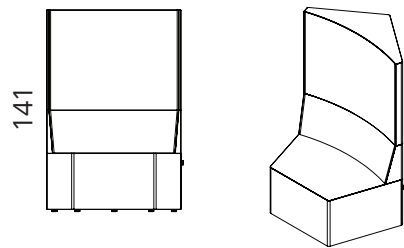
1-F



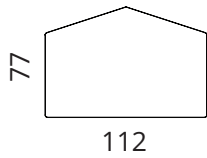
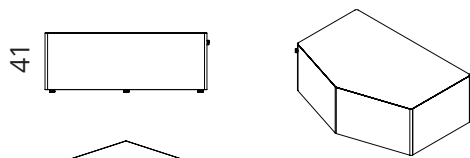
1-S/ H1



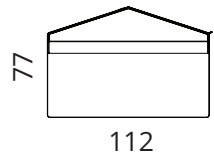
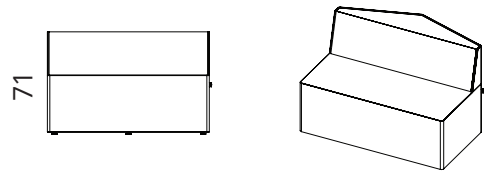
1-S/ H2



1-S/ H3



1-F/ST



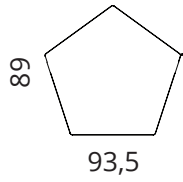
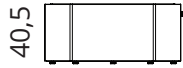
1-S/ST

All dimensions provided in centimetres.

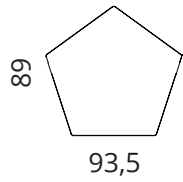
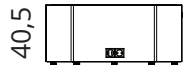
Seat depth: 50 cm (modules 1-S/ST and 1-F/ST: 44 cm)

Dimensions

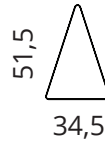
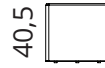
Tables



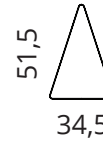
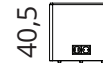
T2



T2/E

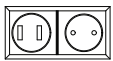


T1



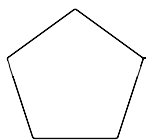
T1/E

Accessories

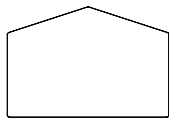


E

Sockets



SOC



SOC/ST



SOC/T1

Socket height 60 mm

All dimensions provided in centimetres.



Materials

Cover materials

Wide range of cover materials, including flame-retardant textiles

Tabletop

Matte, fingerprint-resistant, high-pressure laminate
Formica Infiniti™; colour options: black, white

Main colour options for metal socket



White
RAL 9016

Grey
RAL 7030

Graphite
RAL 7022

Black
RAL 9005



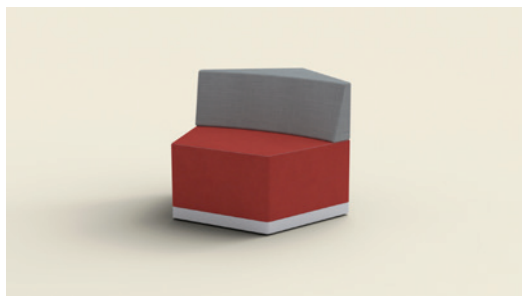
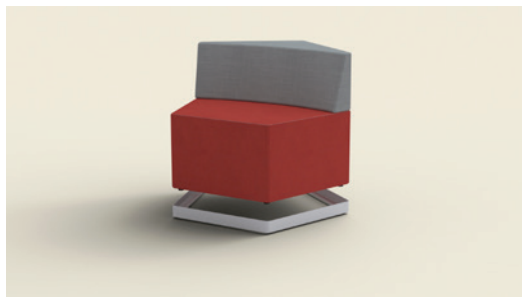
Yellow
RAL 1032

Red
RAL 3016

Purple
RAL 4007

Blue
RAL 5009

Metal socket colour choice at customer's request from RAL catalogue when ordered in greater quantities



softrend.ee
instagram.com/softrend_furniture

